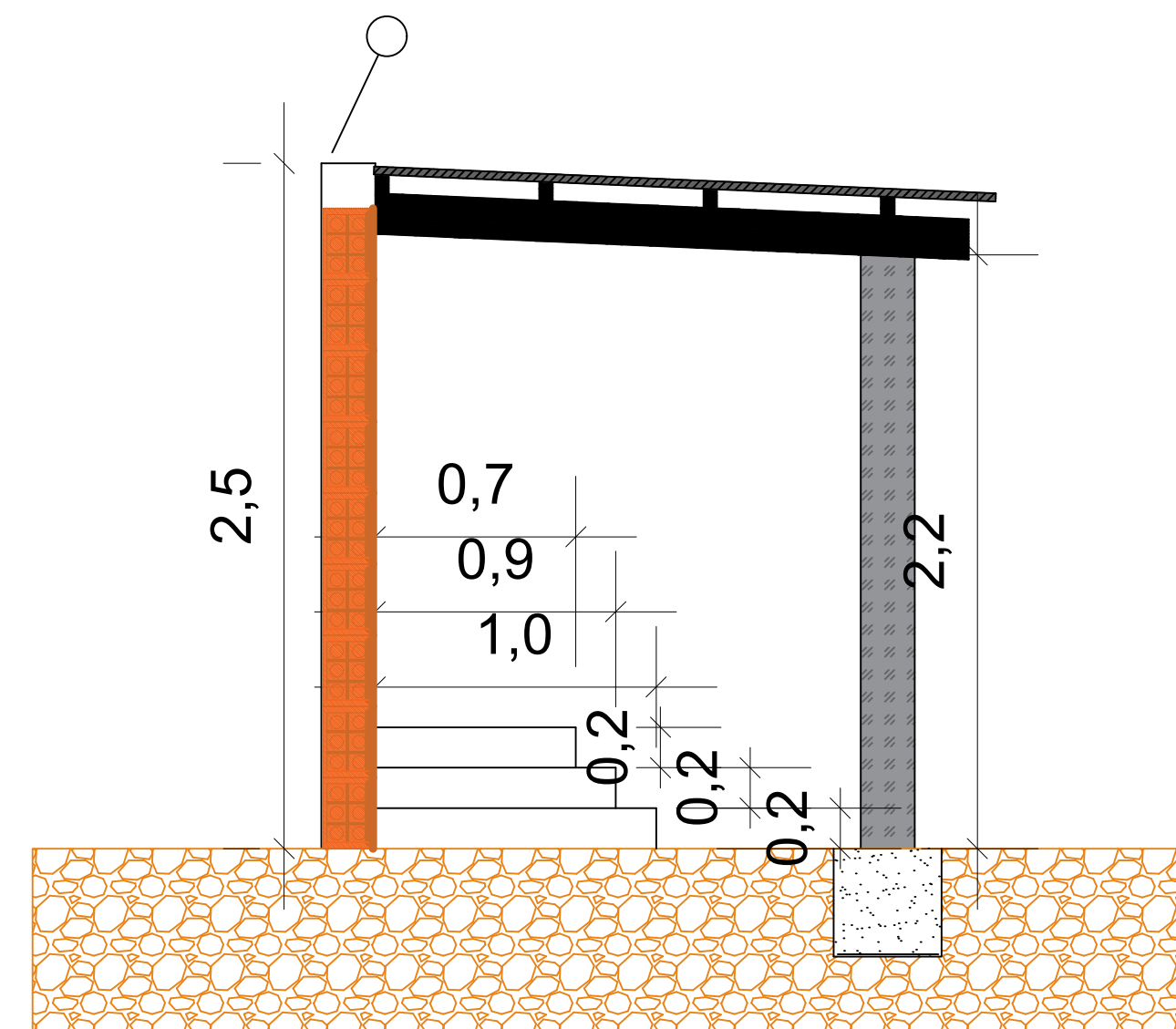
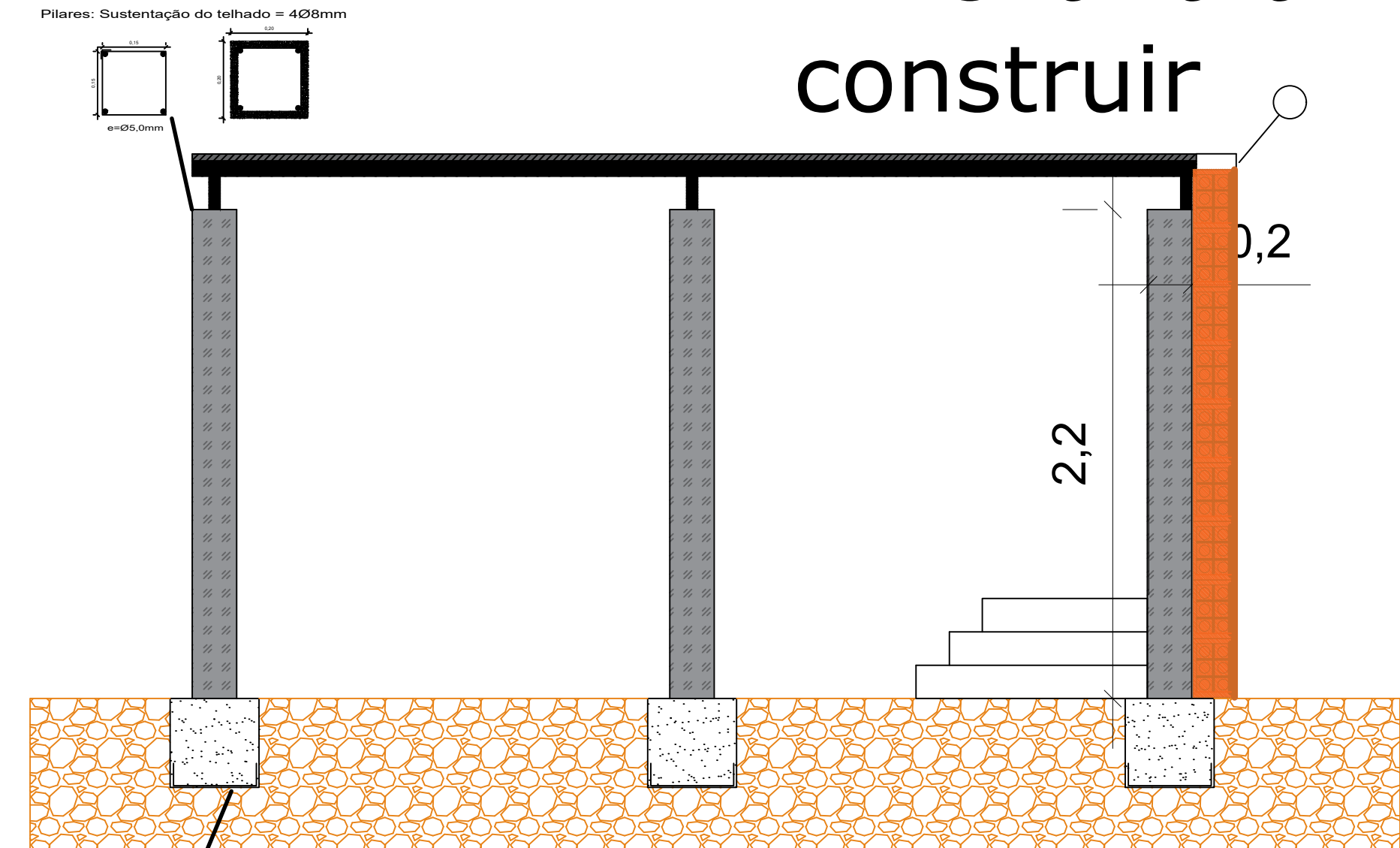


# Alvenaria Existente

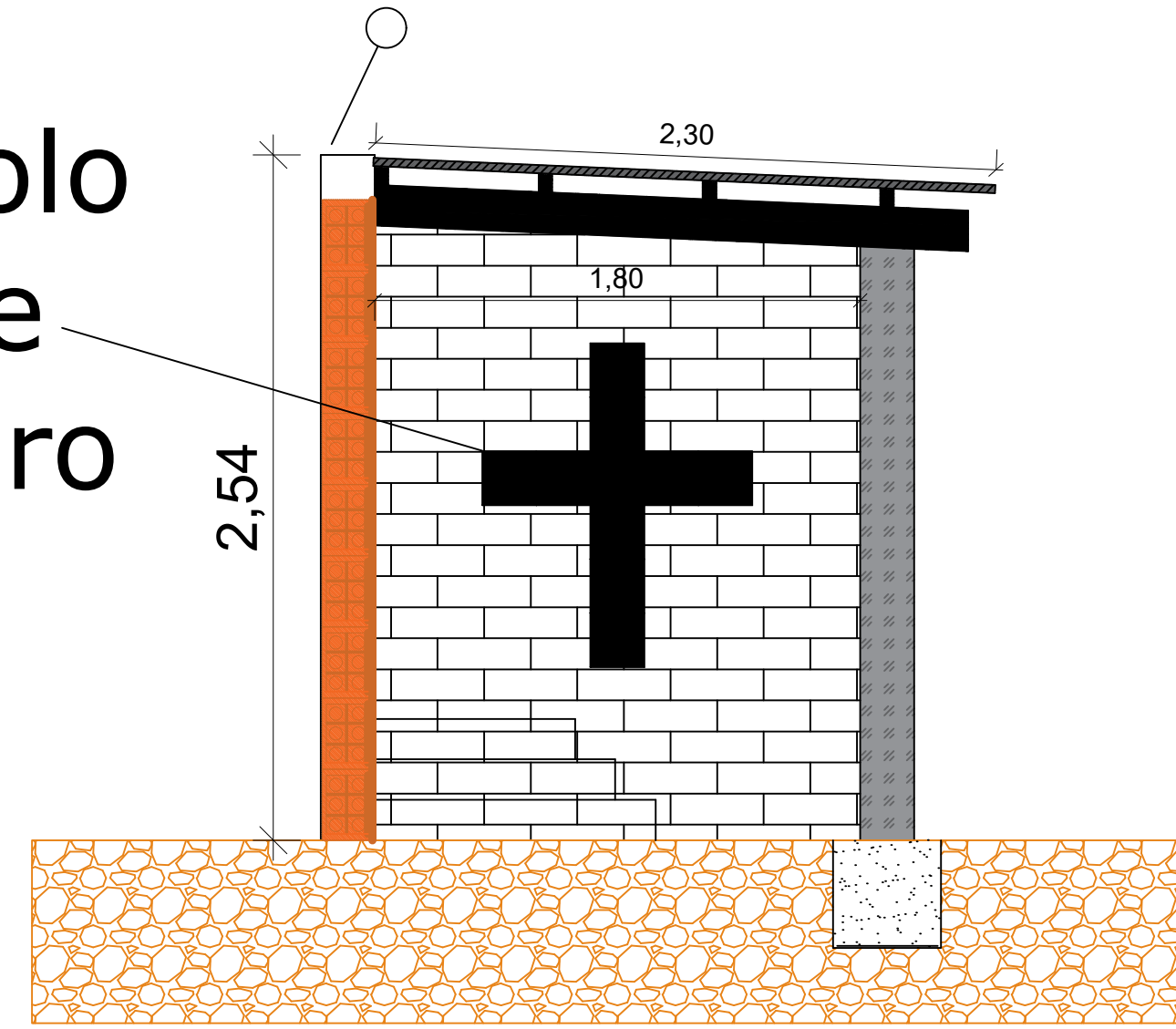


# Alvenaria a construir

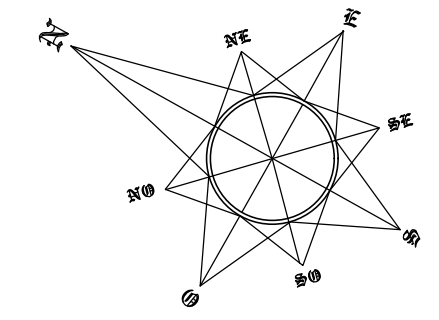
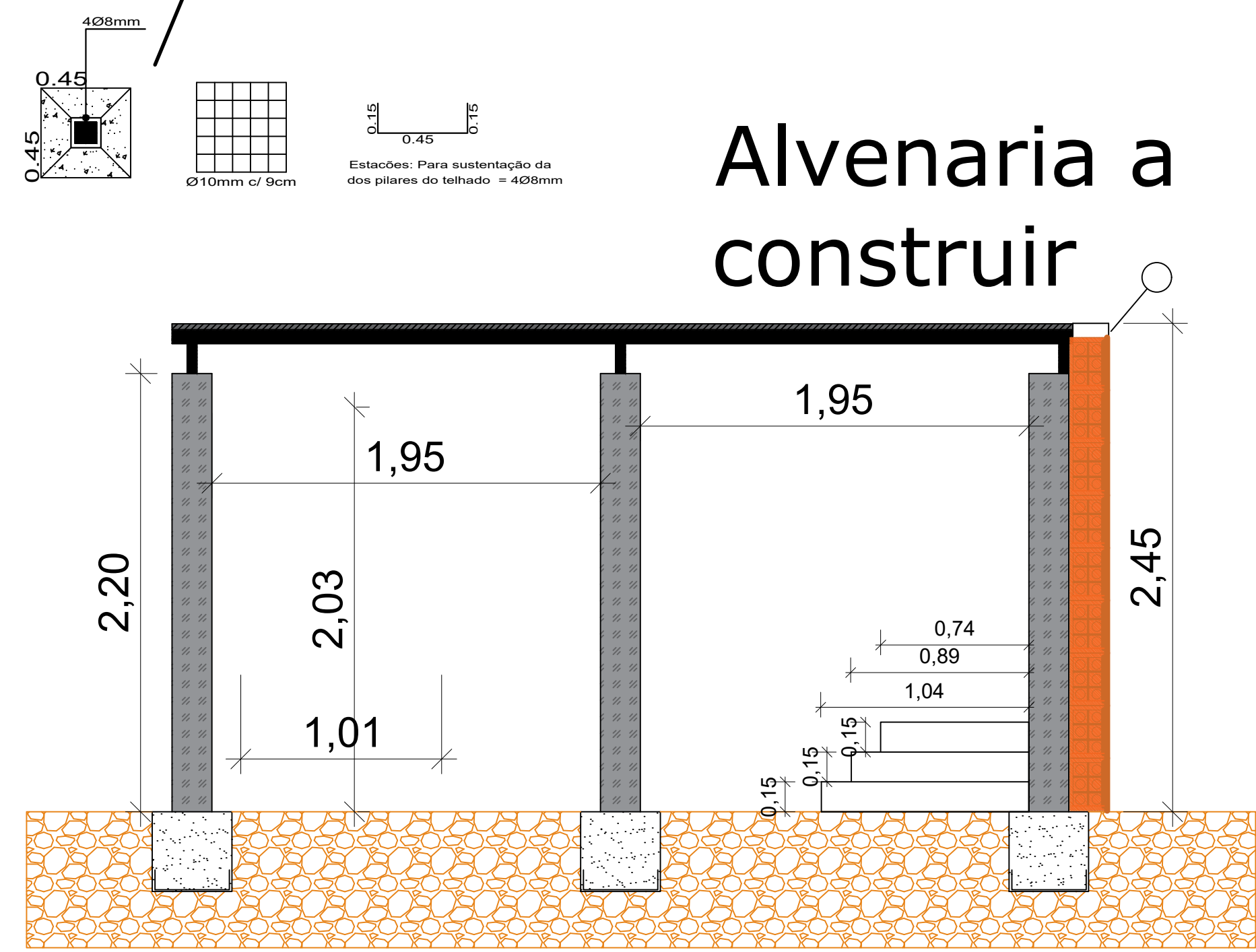


# Alvenaria Existente

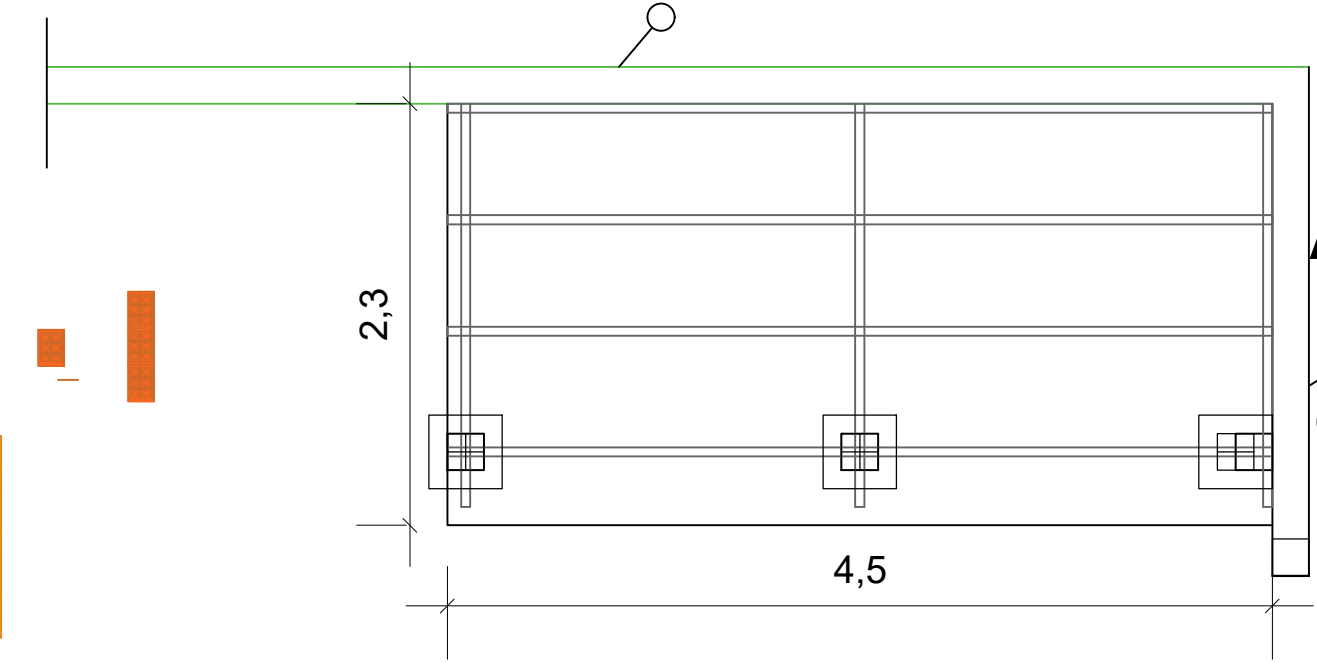
Tijolo de vidro



# Alvenaria a construir

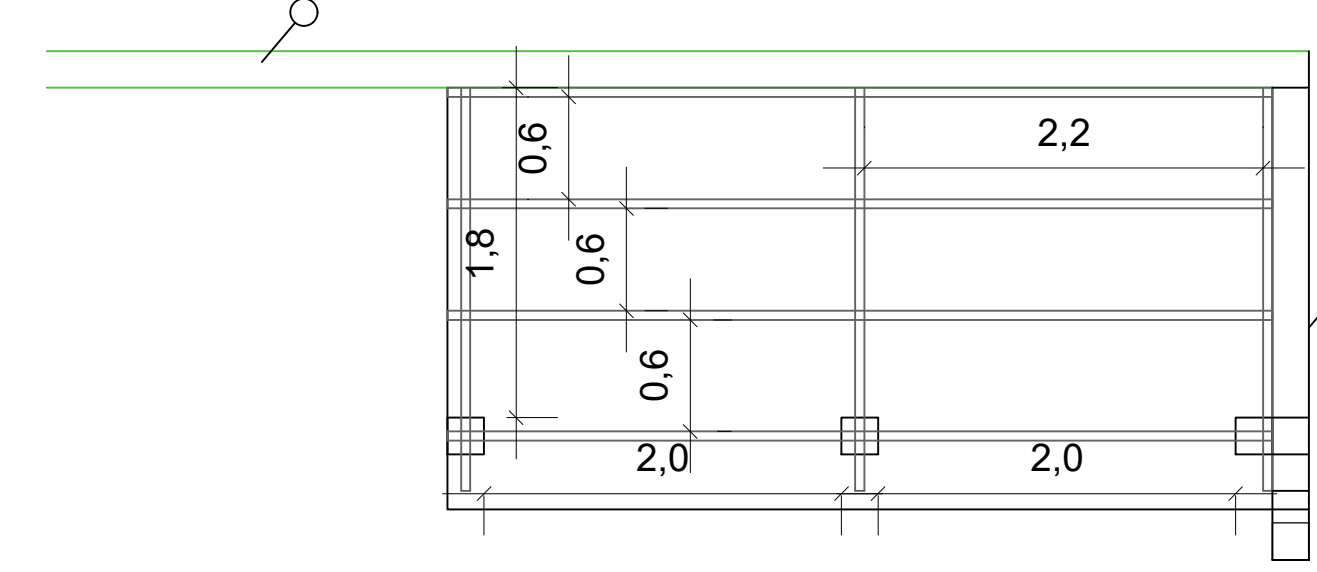


## Alvenaria Existente



Alvenaria a construir

## Alvenaria Existente



Alvenaria a construir

## Prefeitura Municipal de Quaraí

Obra/serviço: Projeto Ampliação Cemiterio Jardim da Saudade

Local: Avenida Ayrton Senna

Prancha: Projeto Detalhamentos Telhado

Extensão: 1961,69m<sup>2</sup> Escala: Indicada Unidade: metro Data: Mai./2022 Nº: 08-08

Proprietário: Responsável técnico:



Jéferson da Silva Pires  
Prefeito Municipal

Ricardo Lopes de Assis  
Eng. Civil - CREA/RS SP 70045478

Av. Artigas, 310 / Centro / Quaraí/RS / CEP 97560-000  
(55) 3423.1301 / www.quaraí.rs.gov.br